

# Permafrost Monitoring

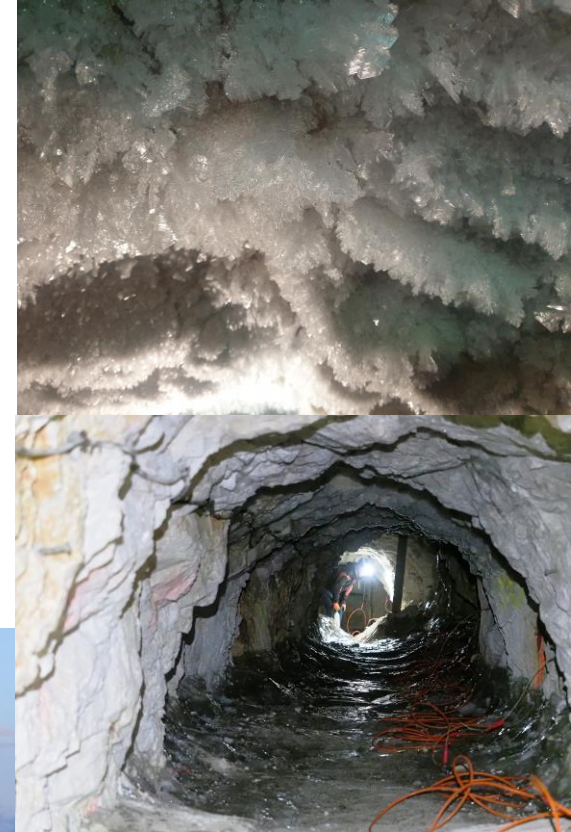
with geophysical measurements and climate data

**Where?** Zugspitze – Tunnel  
*overnight stay in the Schneefernerhaus Research Station (2650 m asl)*

**What?** FIELD WORK (20%): **geophysical measurements,**  
**good physical condition required**  
DATA ANALYSIS (80%): **with Matlab,**  
**previous knowledge required**

**When?** Flexible start possible.

**Language** German or English



Application  
with curriculum vitae and  
transcript of records to  
[verena.stammberger@tum.de](mailto:verena.stammberger@tum.de)